



KEY FINDINGS CONGREGATIONAL ASSESSMENT 2025



A Summary of Insights Shaping the Future of Grace

The Episcopal Church in Summerlin

Grace
in the

Desert



CONGREGATIONAL ASSESSMENT

- Grace completed a Congregational Assessment survey in 2022, so Bishop Elizabeth approved a different mode of assessment as we prepare for our Rector search
- The results will inform our Parish Profile, support the work of the Search Committee, and guide the Vestry in developing a strategic vision for parish growth
- Small group, table-based discussions were held January 6 - March 2, 2025, facilitated by Mother Erica, Vestry members, and parishioners
 - Six assessments were held with 70 households participating (47%)
- The list of questions is available to complete online for the 79 households who have yet to share their thoughts - the link will be open through March 31, 2025





WHERE WE ARE



3

9

AREAS OF IMPROVEMENT



ENJOYING MINISTRY





EXCITEMENT IN 2025



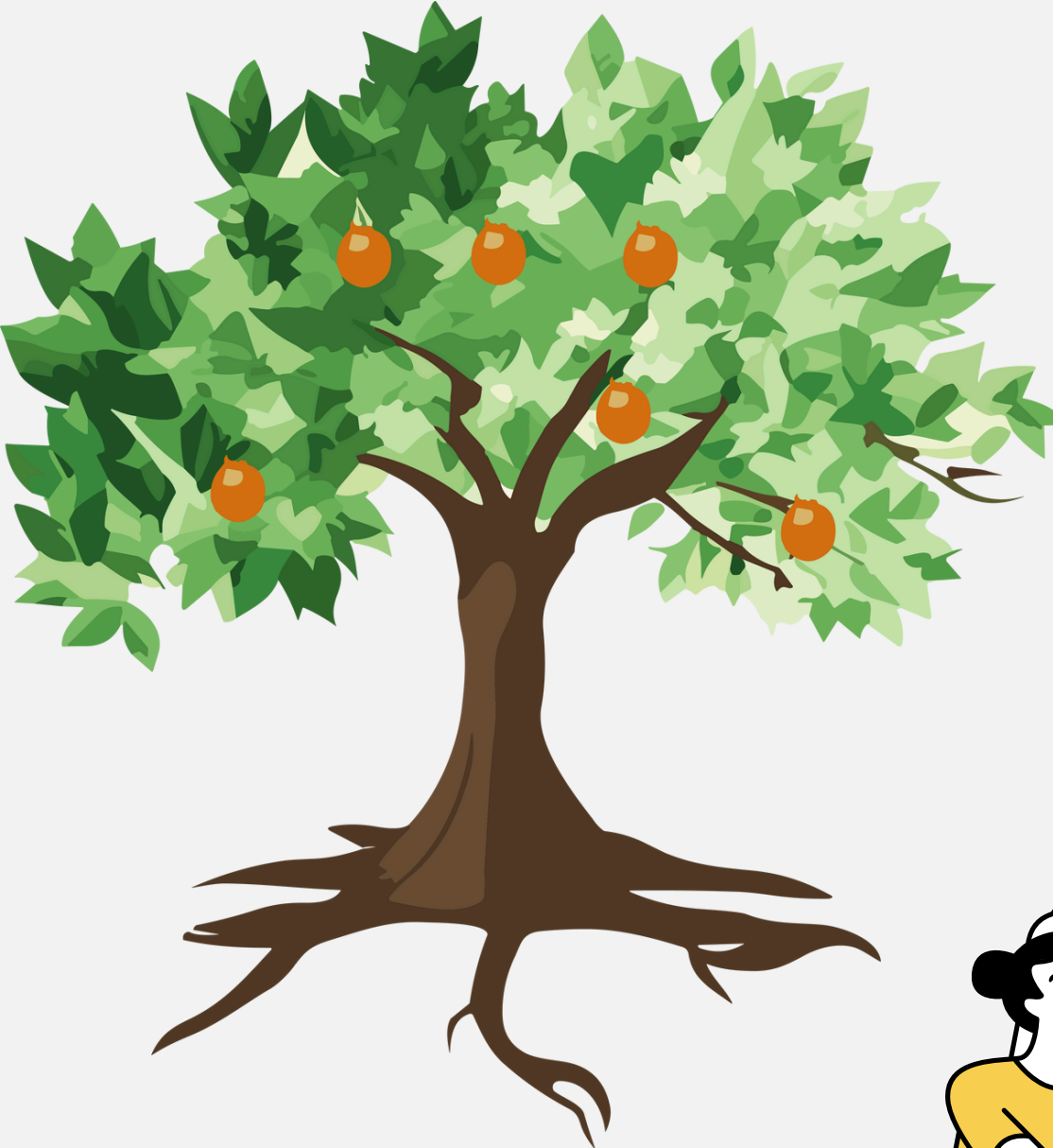
POSITIVE MOMENTUM

increased
attendance & energy

Belonging
Connection

RECONCILIATION
TRANSPARENCY

GROWING IN GRACE





WHERE WE WANT TO GO



COMMUNITY & PROGRAMS

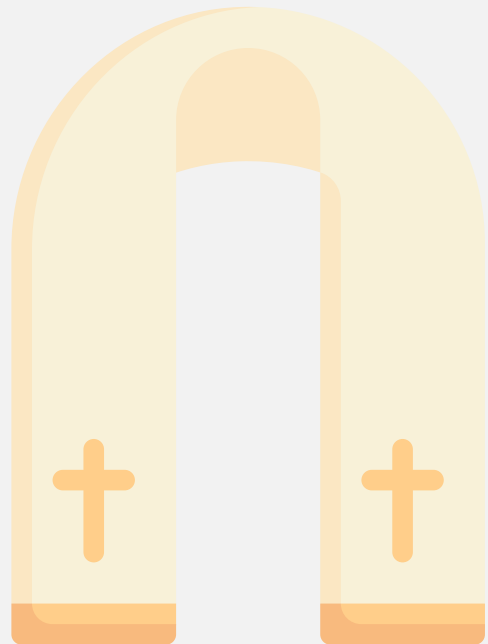
STRENGTHEN
FINANCIAL

STABILITY

EXPAND

children & youth

PROGRAMS



ENHANCEMENTS

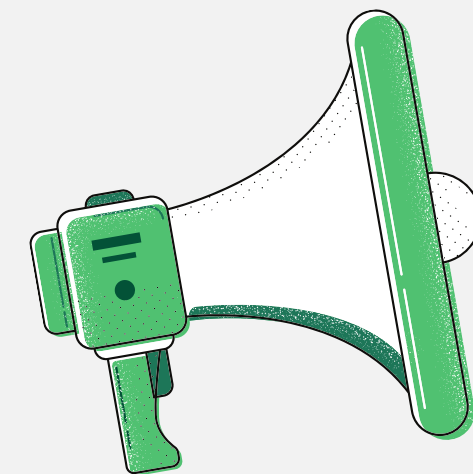
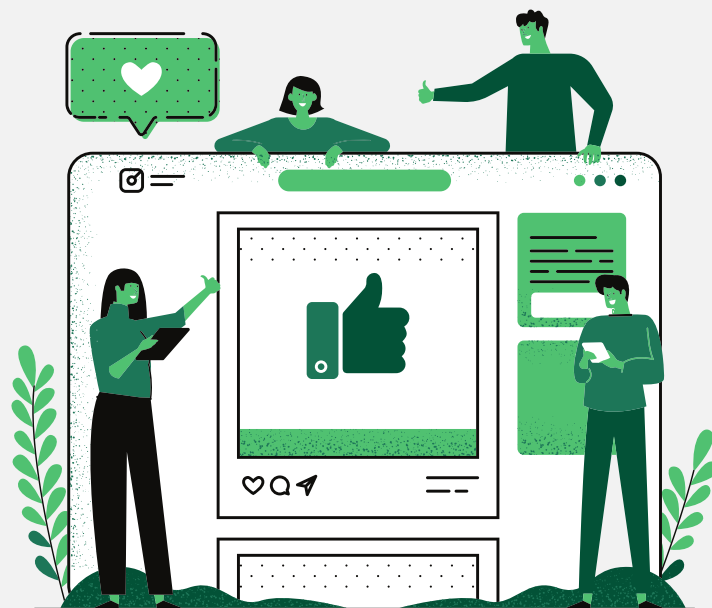


Love
LIKE
Jesus



VISION FOR THE FUTURE

- Remain loving, welcoming, and community-oriented
- Be a leader in inclusivity & financial stability
- Utilize social media for outreach
- Expand connections with marginalized communities

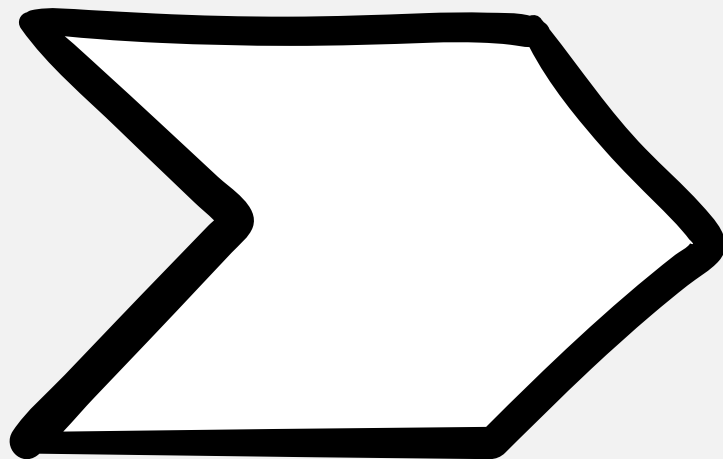




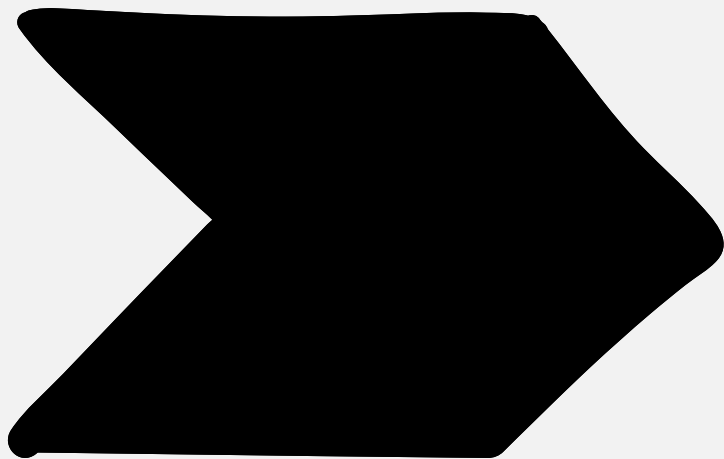
CALLING OUR NEXT RECTOR



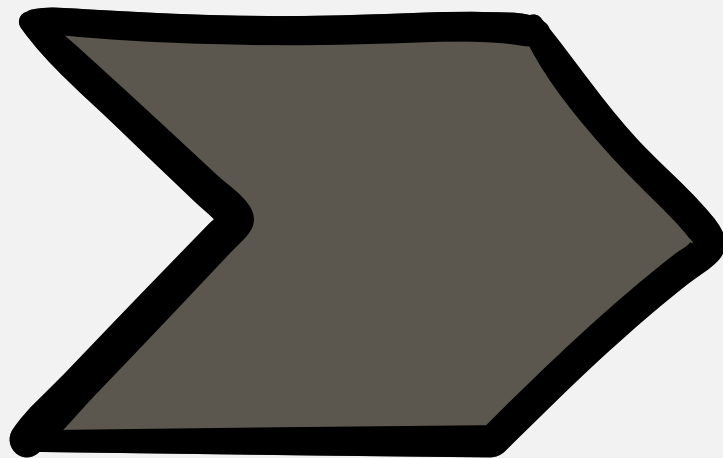
PREPARATION FOR THE RECTOR SEARCH



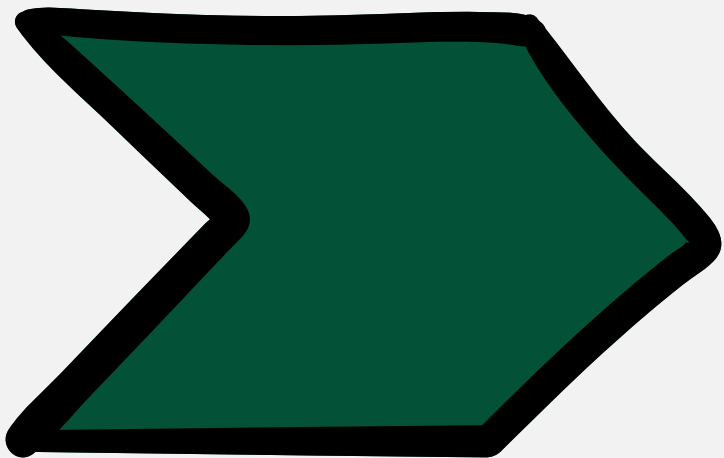
**2023
Financial
Audit**



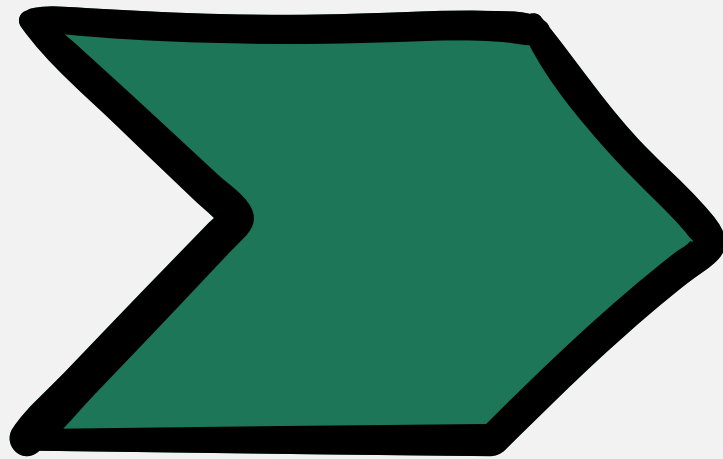
**Congregational
Assessment**



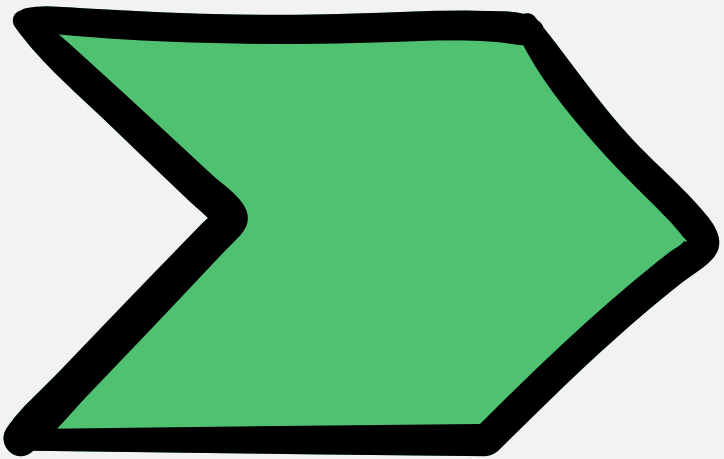
**Five Year
Financials
'23-'27**



**Parish
Profile**



**Gather
Search
Committee**



**Commission
Search
Committee**

INTERVIEWING PRIESTS

- Theology, outreach, and engagement
- Church governance, inclusivity, conflict resolution
- Thoughts on politics in the church
- Experience with failure and problem-solving
- Vision for Grace and community growth

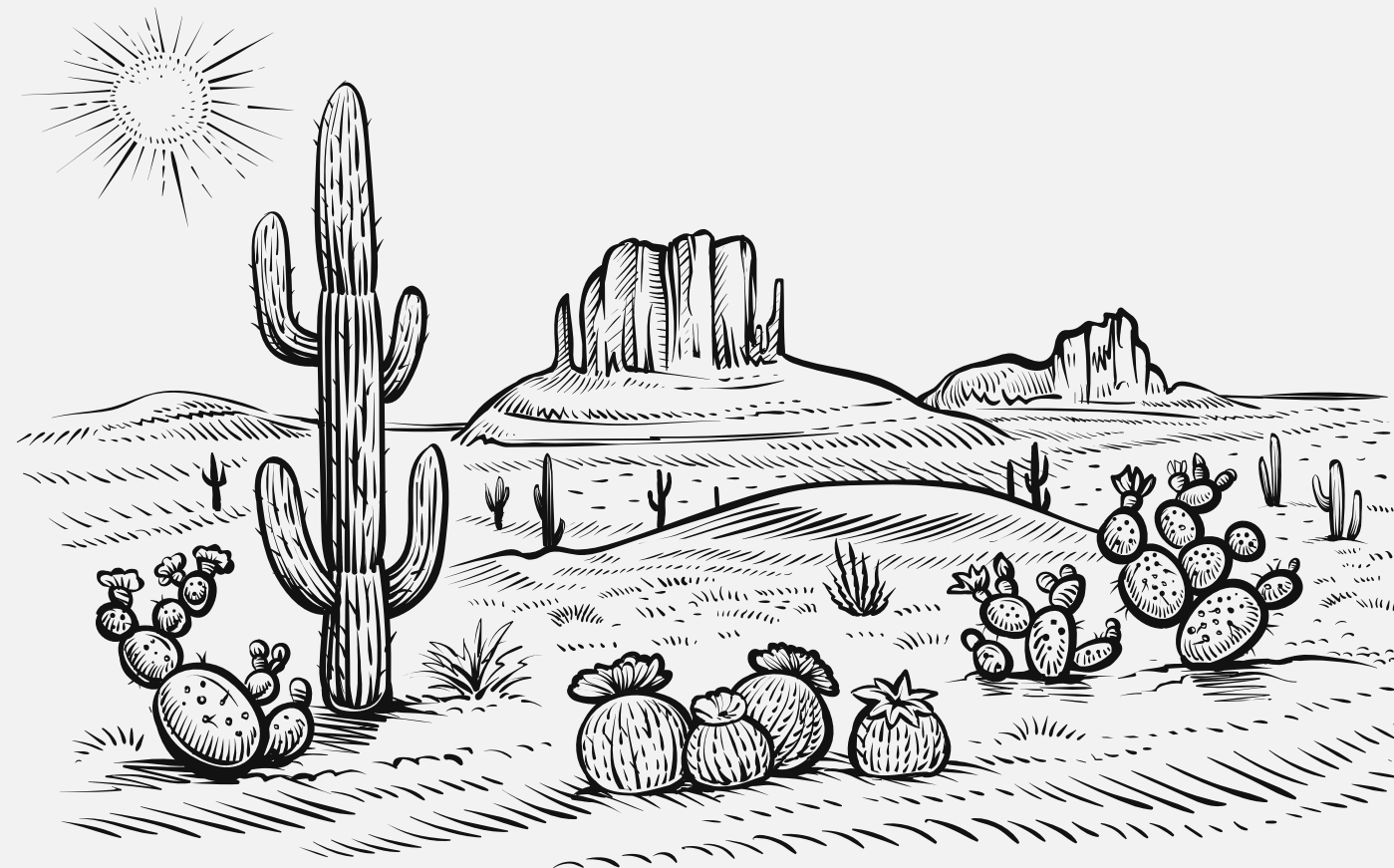
IMPORTANT QUALITIES

- Leadership, humor, and approachability 😊
- Musical background & youth engagement 🎸
- Sensitivity to military families 🏆
- Business awareness & delegation skills
- Long-term commitment to Grace ⌚



CHALLENGES

- Concerns about school system & healthcare 🏥
- Climate ☀️
- Difficulty forming connections in Las Vegas



KEY TAKEAWAYS



Strengthen finances, leadership, and engagement

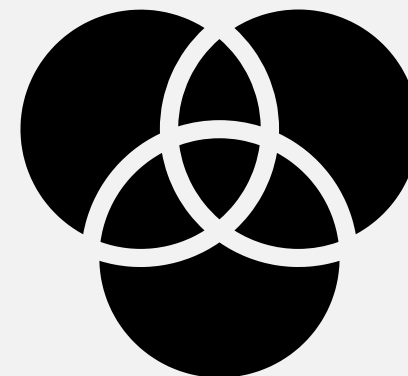
Expand programs for youth & families



Continue fostering a welcoming and inclusive environment



THE
Episcopal
CHURCH



THANK YOU

from Mother Erica & the 2025 Vestry



not pictured: Karmen La'Shaun Miller & Sandy Mangold